

Using New Slacker™ Tactile Mutator To Make Gel-Filled Silicone Appliances



Gel-filled appliances made with Slacker will feel and even wrinkle like real skin.

Slacker™

is a one component additive that alters the “feel” of **Dragon Skin™** or **Ecoflex™** silicones. It allows the user to make fast, realistic wounds, scars, gel-filled appliances and other skin effects that feel like human flesh.

Go Wild! Use Slacker™ in conjunction with Smooth-On’s **Psycho Paint™** and **Skin Tite™** skin effect products to create a variety of wild skin effects. **It’s Easy!**



DEMO

Materials used for this demo: Gypsum™squash™ mold, Dragon Skin silicone rubber, Slacker™ tactile mutator, Silc Pig Fleshtone silicone pigment, dish detergent, alcohol and talcum powder. Also needed: brushes, mixing sticks, measuring cups & towels.



1. One part dish soap and two parts alcohol are combined in a cup.



2. The face mold and face plug are coated with the soap/alcohol mixture to release rubber.



3. Parts A & B of Dragon Skin silicone rubber are measured out 1:1 by volume.



4. Parts A & B are mixed together along with Silc Pig Fleshtone pigment.



5. The mold cavity and positive face plug are brushed with a thin layer of the skin-tone Dragon Skin silicone rubber. The Dragon Skin layer is cure accelerated with a heat gun in about 5 minutes.



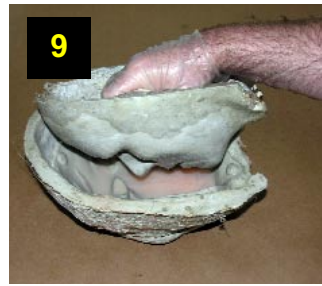
6. Later, one Part A & one Part B of Dragon Skin silicone rubber are then measured out by volume, along with three parts of new Slacker tactile mutator.



7. The Dragon Skin and Slacker are mixed together along with Silc Pig Flesh tone pigment.



8. The blend is then poured into the the lowest part of the mold, allowing the liquid to seek its own level.



9. The face plug is then pressed into the mold. A mold strap is then used to secure and pressurize.



10. As pressure is applied, material is distributed evenly throughout the mold. Dragon Skin and Slacker blend cure for 6 hrs.



11. The mold strap is removed and a screwdriver is used to break the vacuum that has formed in the mold.



12. An exacto knife is used to cut excess flashing that clings to the mold.



13. The mold is opened and the gel-filled appliance is removed from the mold. The appliance is ready to be removed from the face plug.



14. Because the appliance's surface is so "clingy," baby powder is brushed on it to prevent it from folding over on itself.



15. As the appliance is removed, powder is also brushed on the other side to prevent clinging.



16. The result is a strong, gel-filled silicone appliance that can be adhered to the face with *Skin Tite* adhesive. *Next step*; paint appliance with *Psycho Paint™* or have theatrical makeup applied while on the face.



1. Silc Pig™ pigments, toluene and Psycho Paint™.



2. Apply initial layer of Silc Pig and Psycho Paint™.



3. Silc Pig™ red and Psycho Paint™ heighten the effect.



4. Cut out eyes, nostrils and the mouth of appliance.



5. Apply and fit appliance to subject's face.



6. Secure edges of appliance to skin with Skin Tite™.

